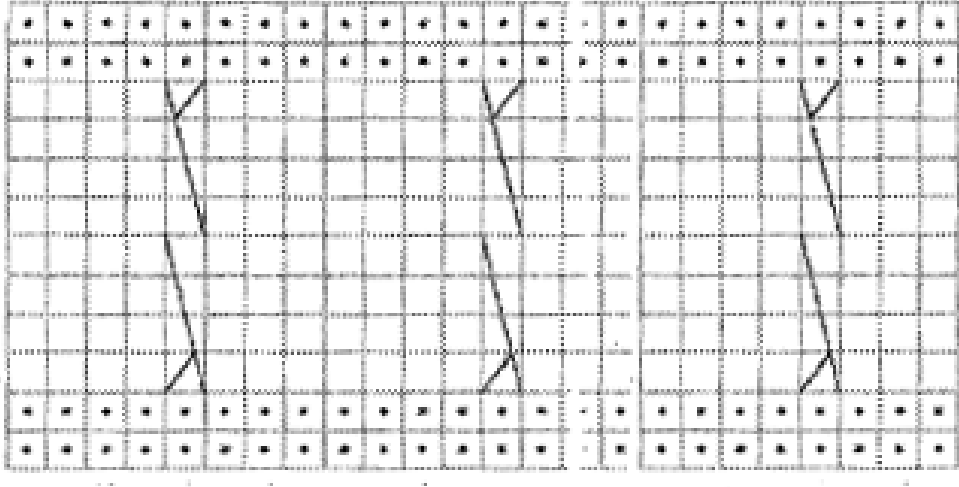
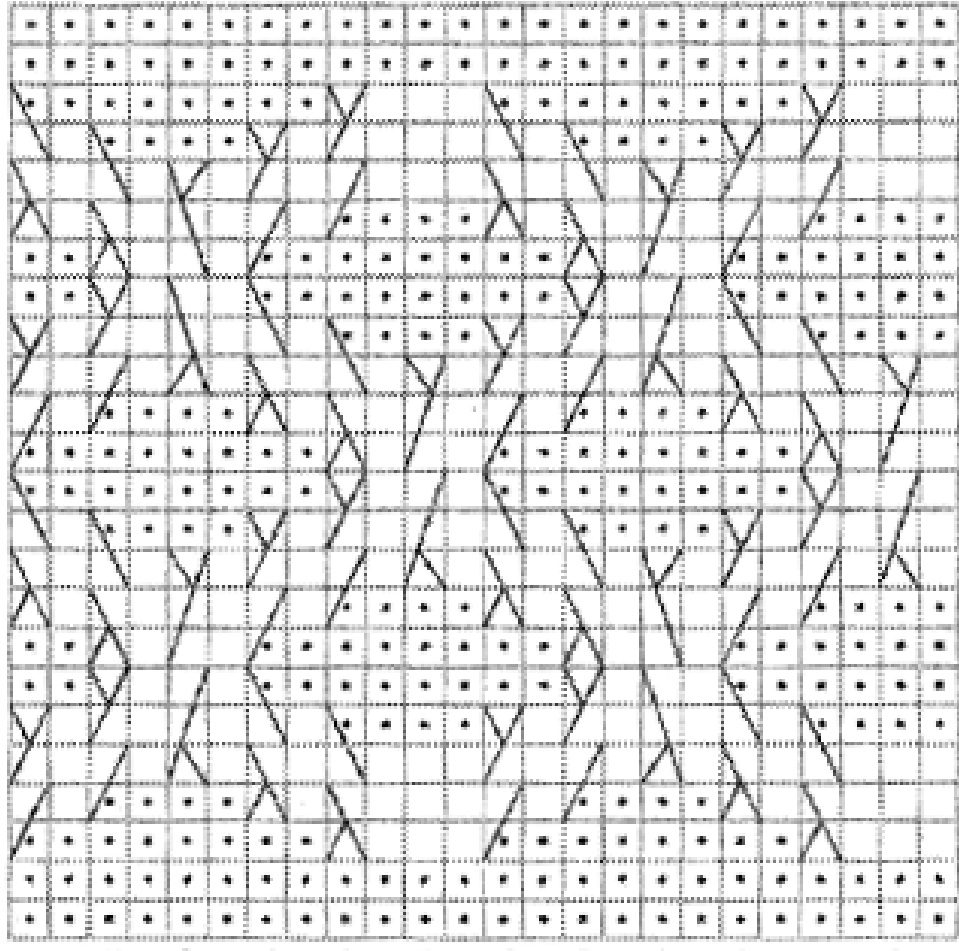
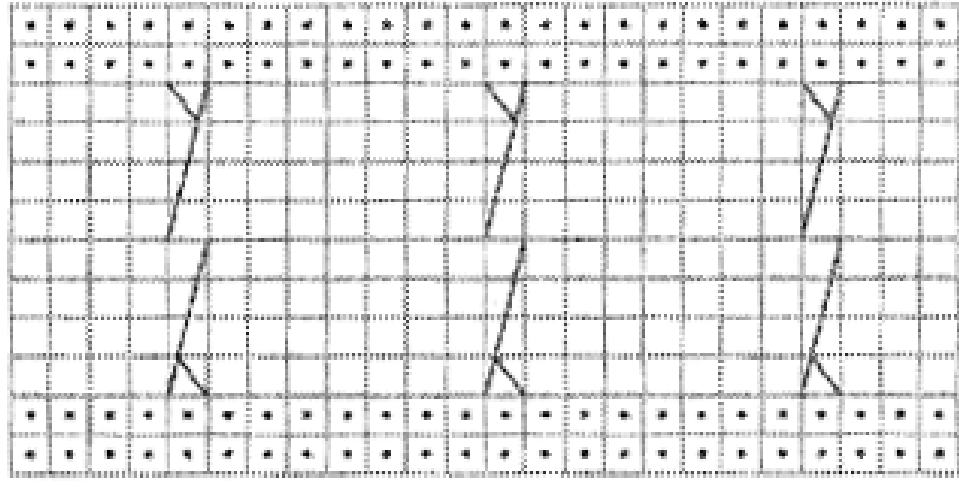
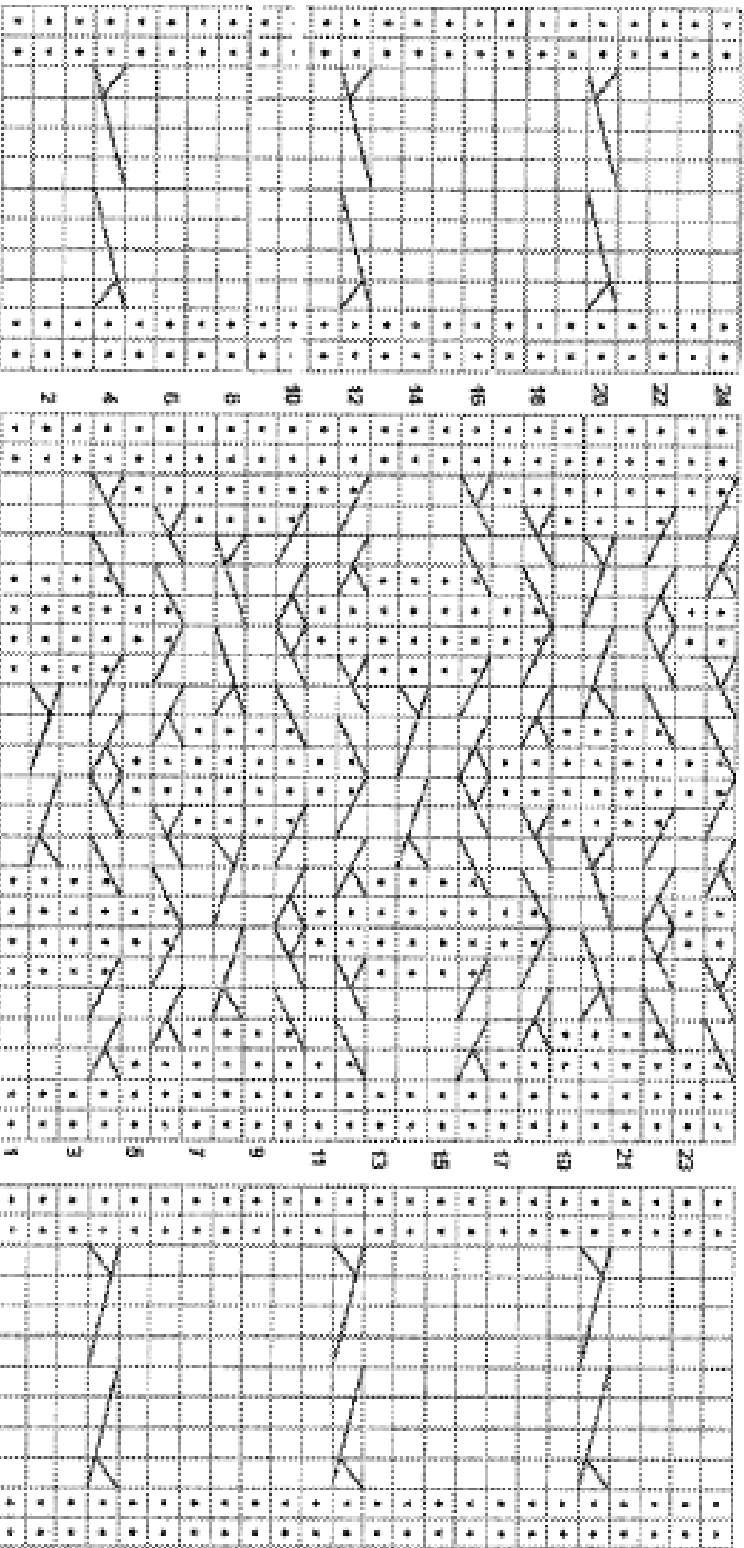


Wild oak cable



Wild oak cable



Key

- braid on a RS row, put on a WS row
- put on a RS row, braid on a WS row
- step 1 sets to a cable needle and hold at front of work, K1, K2 from cable needle
- step 2 sets to a cable needle and hold at back of work, K3, K4 from cable needle
- step 3 sets to a cable needle and hold at front of work, P1, K2 from cable needle
- step 4 sets to a cable needle and hold at back of work, K3, K4 from cable needle
- step 5 sets to a cable needle and hold at front of work, K2, P1 from cable needle